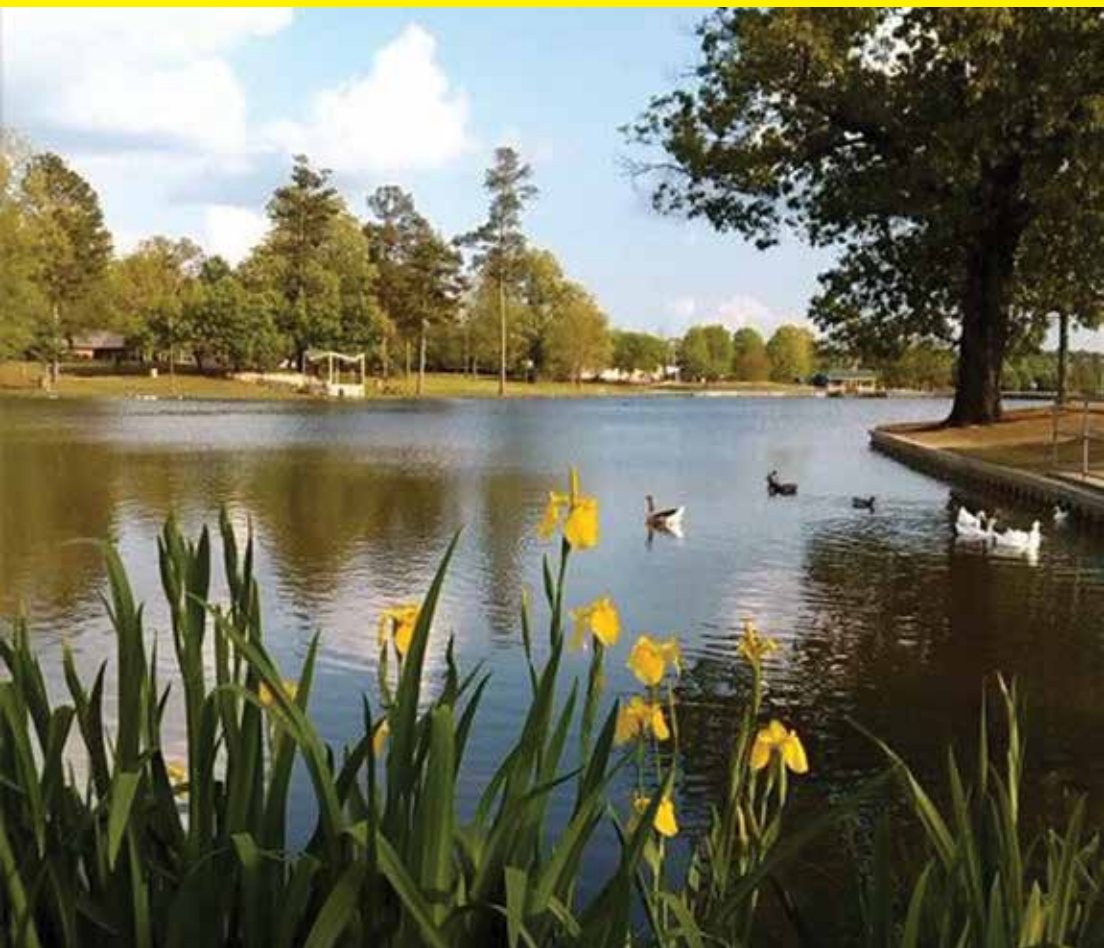


LEISURE SERVICE GUIDE

Tupelo Department of Parks and Recreation



Photography complimentary of Linda Thorn

PH. 662.841.6440 / FAX 662.841.6580 / WWW.TUPELOPARKSANDREC.ORG



2021



City of Tupelo Department of Parks and Recreation

Administrative Office:
655 Rutherford Road • Tupelo, MS 38801

Mailing Address:
P.O. Box 3608 • Tupelo, MS 38803

Telephone (662) 841-6440 • Fax (662) 841-6580
www.tupeloparksandrec.org

Regular office hours are 8:00am-5:00pm Monday through Friday
We will be closed on all National Holidays

***Member of National Recreation and Park Association and
Mississippi Recreation and Park Association***



Contact Numbers

Bel-Air Senior Recreation Center	(662) 841-3791
Bel-Air Golf Shop	(662) 841-6446
Lee Acres Center	(662) 841-6452
Oren Dunn City Museum	(662) 841-6438
Rec-Check	(662) 842-8422
Tupelo Aquatic Center	(662) 840-3768

Mission Statement

The City of Tupelo Department of Parks and Recreation strives to improve the quality of life for the citizens of Tupelo by providing professionally designed comprehensive recreation and leisure programs and services. To accomplish this mission, the Department:

Provides diversity in programming opportunities to meet the changing needs and interests of users. Maintains safe, well-managed facilities and programs to ensure opportunities for participation by all. Fosters the development of knowledge, interests, and behaviors that promote a healthy lifestyle. Encourages the development of positive attitudes regarding participant and sportsmanship. Offers programs and services at a cost that is affordable to all.

Rental & Recreational Facilities

Rockwell Center 1199 Joyner Avenue

\$100.00 rental fee, \$100.00 damage deposit

Fee includes 1 large room/1 small room, kitchen facility, 20 • 6ft tables (rectangle) and chairs for 100 people. This facility is used mainly for birthday parties, family reunions and dances.

Augustus Center 1400 North Green Street

\$100.00 rental fee, \$100.00 damage deposit

Fee includes 1 room for up to 100 people, 10 • 6ft Tables (rectangle) & chairs for 75 people. This facility is used for various get-togethers. The Augustus Center is available for neighborhood activities.

Bel-Air Center 2107 Country Club Road

Facility Currently Under Construction

Fee includes two large rooms, full kitchen, patio area, 15 Round Tables, 2 • 6ft Tables (rectangle), 5 • 8ft Tables (rectangle) and chairs for 100 people

Contact Parks & Recreation for rental information.

Ballard Park 655 Rutherford Road

West Pavilion **\$50.00 – 1/2 Day, \$100.00 – Whole Day (holds 150 people)**

East Pavilion **\$50.00 – Whole Day (holds up to 20 people)**

Gazebo **\$50.00 per day (weddings/church services)**

Stage **Fee depends on size/type of event.**

Hancock Park 310 Monument Drive

Pavilion **\$50.00 – per day (holds 25-30 people)**

Theron Nichols 1743 Mitchell Road

Pavilion **\$50.00 – per day (holds 25-30 people)**

Damage Deposit **\$25.00**

Veterans Park 800 North Veterans Boulevard

Veterans Pavilion **\$50.00 – 1/2 Day, \$100.00 – Whole Day (holds 75 people)**

Veterans Memorial Pavilion **\$50.00 – 1/2 Day, \$100.00 – Whole Day**

(Holds approximately 40 people)

Gumtree Park 683 North Front Street

Pavilion **\$50.00 – 1/2 Day, \$100.00 – Whole Day (holds 75 people)**

Damage Deposit **\$25.00**

A.M. Strange Building 579 N. Green Street

\$25.00 rental fee, \$25.00 damage deposit

Meeting space for 25-30 people. Includes table and chairs.

Recreational Center (Non-Rental Facility) 906 Fillmore Drive

Lee Acres offers a complete weight room, portable indoor basketball courts, raquetball, volleyball & dodgeball courts. The center has organized activities, board games, and sports competition after school.

Center hours are Monday-Thursday 3:00pm-7:00pm

**All Facility rentals are one day only from 8:00 am-10:00 pm.
Contact Sheila Young for Rental Information at 662-841-6440.**

City of Tupelo Department of Parks & Recreation Sponsors

PLATINUM SPONSORS

BancorpSouth
North Mississippi Medical Center
Community Bank
BankPlus
Tupelo Coca-Cola Bottling Works
Tupelo Elvis Presley Fan Club

GOLD SPONSORS

Buffalo Wild Wings
Tommy Morgan Realtors
The Orthopedic Institute of North MS
D'Casa
Renasant Bank
Gibson Corrugated
Modern Woodmen of America
Specialty Orthopedic Group
Dodge's
Ken Jeter Store & Restaurant Supply
Steele's Dive

SILVER SPONSORS

Barnes Crossing Hyundai Mazda
Haire Wealth Management
Buffalo Wild Wings
Papa Johns Pizza
Trustmark
UPS Store
Specialty Sales & Supply
1st Franklin Financial
Ross and Yerger
Social Security Consultants
Independent Furniture Supply
Ear, Nose, & Throat Physicians
Kiwanis Club of Tupelo
Hodges Orthodontics
Rebelanes, Inc

BRONZE SPONSORS

BNA Bank
Create Foundation
Happy Smiles Dentistry
Urgent Team
Brad Morris Law Firm

MEDALIST SPONSORS

Lancaster Law Firm
Law Office of Andrew Stuart
Long View Planning Partners
Lost Pizza
Magnolia Property Improvements
Magnolia Veterinary Surgery
Mail Managers
Main Street Family Dentistry
Med Plus Urgent Care
Mitchell/McNutt
Murphree Paving
North MS Masonry
Northeast Endodontics
Purple Heart Homes
Raybern Foods
Relias Emergency Medicine Specialists
Brian Miller Renasant Bank Mortgage Lending
Restaurant & Store Supply
Robert Gaines State Farm
Rogers Realty & Appraisal
Shoe Carnival
Sid's Trading Co
Southern Roofing & Renovations
Spectacular Specs
Dilworth Small Animal Hospital
Digestive Health Specialists
Crossover Fitness
Credille Insurance
Complete Property Restoration
Comfort Engineering
Lee County Circuit Clerk Camille Roberts Duleney

City of Tupelo Department of Parks & Recreation Sponsors

MEDALIST SPONSORS (Cont.)

Century Construction
Celebrity Fast Wrapz
Cardiology Accociates of North MS
Brad's Heating and Cooling
Bobby Brock Insurance
Blue Delta Jean Co.
Barnes Crossing Auto Group
B&B Concrete
Auto Ally Recovery
Amanda Miller
Wise Staffing Group
1st American National Bank
All Saints Episcopal Church
Stennett Law Firm
Dixie Electrical
Sloan Landscape Architecture
Subway
System Automotive
Interiors
The Shoe and Boot Outlet
Tony Barber Wrecking Service
Tupelo Aviation Unlimited
Tupelo Church of God
Tupelo Endodontics, PA.
Waide & Associates
Wesson & Mothershed Eye Center
L & J Expedites Logistics
Kelly Tree Services
Jim H. Johnson
Jesco, Inc.
Jeff's Electric Service Inc.
J.T. Ray
Integrated Communications
Gro Green Solutions

Goodman Law Firm
Fox's Pizza Den
Forklift
Flight Design
Farm Bureau Insurance
Espy Group
Elite Comfort Solutions
Eaton Babb and Smith

2020 Calendar

January

4-22	Spring Registration Basketball, Softball, Soccer Tots
17-18	Lifeguard Certification Class at Tupelo Aquatic Center

February

1	Basketball Season Begins
1-March 1	Adult Softball Registration
8	Healthy Kids Running Series Registration Begins
11	Basketball Season Ends
13	Mooreville High School Jamboree
19-21	GSL Winter Worlds Adult SB Tournament
19-21	USSSA Batter Up Global World Series Qualifier
20	MidSouth League Games
26-27	Grand Slam Battle at Ballard
27	Tupelo FREE4ALL Youth Softball Tournament
26-28	Mississippi Short Course State Championship North MS Regional Singles Championship
27-28	Tupelo Spring Classic

March

2	TYSA tots Begin Spring Soccer Start Date
5-7	USSSA Chin Music Global World Series Qualifier
5-7	Tupelo's Top TYR Swim Meet
9	Basketball Season Ends
12-13	Lifeguard Certification Class at Tupelo Aquatic Center
13	Tupelo Spring Fling Youth Softball Tournament
19-21	PG Deep South Turf Trail Championship Series
26	10th Annual In-Water Easter Egg Hunt
26-29	Border Wars-Adult Softball Tournament
(Canceled 2021)	Cherry Blossom Festival
27	Diamond Daze Youth Softball Tournament

April

5	Lifeguard Certification Class at Tupelo Aquatic Center
8	Recreational Soccer Ends
9	Fishing Rodeo
9-11	Mississippi Road to PG Invitational Championship Series
10	Big Bat Classic Youth Softball Tournament
12	Healthy Kids Running Series Opening Day of Baseball
16-18	USSSA It's Tater Time World Series Qualifier
16-18	65 and Over Tennis Tournament Adult Softball Tournament
19	Healthy Kids Running Series
20	Adult Softball Opening Day Youth Softball Opening Day
23-25	PG Deep South Turf Trail Championship Series
24	Adult Triathlon
26	Healthy Kids Running Series
30-May 1	Lifeguard Certification at Tupelo Aquatic Center
30-May 1	Grand Slam Super Slam Turf Kings

May

- 1 Lifeguard Certification at Tupelo Aquatic Center
Grand Slam Super Slam Turf Kings
Adult Softball Tournament
- 3 Healthy Kids Running Series
- 4 Summer Day Camp Registration Begins
- 7-9 USSSA Mid-South Select NIT
- 8 Mother's Day Madness Youth Softball Tournament
- 10 Healthy Kids Running Series
POP in the Park-Lupus Awareness Day
- 14-16 PG Deep South Turf Trail Championship Series
- 17 Fall Registration Soccer, Flag Football, Cheerleading
- 17-18 Lifeguard Certification Class at Tupelo Aquatic Center
- 17-18 Premiere Cup, Soccer Tournament
- 17-20 Week 1 Group Swim Lessons at Tupelo Aquatic Center
- 18 ADL Finale-Soccer
Dudie Burger Festival
Adult Softball Tournament
- 21-23 USSSA Slangin' Gas World Series Qualifier
- 22 Tupelo Aquatic Center Recreation Swim Summer Hours Begin
4th Annual Itty Bitty Beach Party at Tupelo Aquatic Center
- 24-27 Week 2 Group Swim Lessons at the Tupelo Aquatic Center
- 28-29 Grand Slam Memorial Bash
- 28-30 Gum Tree Adult Softball Tournament
- 31 Memorial Day Ceremony

June

- 1-4 Week 3 Group Swim Lessons at the Tupelo Aquatic Center
- 4-6 Exposure Showcase Youth Softball Tournament
- 5-6 North MS Classic Youth Softball Tournament
- 7 CC Augustus Pool Opens
- 10 Recreational Baseball Season Ends
- 7-10 Week 4 Group Swim Lessons at the Tupelo Aquatic Center
- 11-13 USSSA State Championship Warm-Up
- 14-17 Week 5 Group Swim Lessons at the Tupelo Aquatic Center
- 17 Recreational Softball Season Ends
- 18-19 Grand Slam Wood Bat Classic
- 21-24 Week 6 Group Swim Lessons at the Tupelo Aquatic Center
- 21-25 TYSA Soccer Camp
- 22, 24 8, 10, 12 U Express Tryouts
- 25-27 PG Deep South Turf Trail Championship Series
- 26 Adult Softball Tournament
- 28-July 1 Week 7 Group Swim Lessons at the Tupelo Aquatic Center

July

- 1-25 Adult Fall Registration for Softball and Kickball
- 4 All-America City Family Picnic in the Park
- 6-9 Week 8 Group Swim Lessons at the Tupelo Aquatic Center
- 12-15 Week 9 Group Swim Lessons at the Tupelo Aquatic Center
- 12-16 TYSA Soccer Camp
- ???? Mississippi Swimming Inc. Long Course State Championships
- 17-18 Southern NIT Adult Softball Tournament
- 19-24 Week 10 Group Swim Lessons at the Tupelo Aquatic Center
or CC Augustus Pool
- 20 14, 16, 18 U Express Tryouts
- 22 14, 16, 18 U Express Tryouts
- 22-25 40 & Over Senior Slowpitch Nationals Adult Softball Tournament

July (Continued)

- 27-31 USA Swimming Southern Zone Age Group Championships at Tupelo Aquatic Center
- 30 CC Augustus pool Closes

August

- 9 Open Camp-Out Registration
Cheer Workshop
- 14 USSSA Adult State Softball Tournament
- 14 Flag Football Opening Day
- 16 Flag Football Games Begin
- 17 Adult Softball Starts
- 19 Kickball Begins
- 21-22 Mixed Doubles Tennis Championships
- 23 Cheer Begins
- 28-29 MS GSL State Tournament Adult Softball Tournament

September

- 6 Youth Basketball Registration Begins
- 7 Rec Soccer Begins
- 11 Touch-A-Truck
- 18 Community Forward Festival
- 18-19 Fall Tupelo Soccer Tournament
- 24-25 Family Camp Out
- 25 Suicide Prevention Walk
- 26 Celebration of Cultures

October

- 4 Healthy Kids Running Series
- 11 Flag Football Ends
Healthy Kids Running Series
- 21 Recreational Soccer Ends
- 22 MHSAA State Swimming Championships Class I at Tupelo Aquatic Center
- 23 MHSAA State Swimming Championships Class II at Tupelo Aquatic Center
Tupelo Spooktacular Youth Softball Tournament
- 25 Trunk or Treat
- 29 7th Annual Pick a Pumpkin from Our Patch at Tupelo Aquatic Center
- 30 Bump in the Night Adult Softball Tournament

November

- 2 Adult Softball Ends
- 4 Kickball Ends
- 11 Veterans Day Ceremony
- 19-21 John Servati Memorial Short Course
- 30 Lighting of the Park

December

- 6 Youth Basketball Begins
- 10-12 Nightmare Before Christmas Invitational
- 20 Lifeguard Certification Class at Tupelo Aquatic Center

Challenger League Sports

Challenger League is open to all with physical and mental disabilities, ages 5 and up. This league is established to provide an athletic outlet for all individuals regardless of their abilities. This league participates in softball, soccer, and basketball.

Due to Covid, programming is to be determined on a month to month basis.

Please contact Parks & Recreation for more information.

CHALLENGER

Youth Recreational Baseball

Recreational Baseball is designed to offer all players a chance to experience the game at the grass roots level. Games are played during the week and it is open to all players aged 4-18.

The recreational baseball programs goal is to teach the basic fundamentals and sportsmanship. The baseball complex has nine lighted baseball fields located at BankPlus Sportsplex at Ballard Park with restrooms, two concessions, and a one-mile trail surrounding the park.

Registration Dates: January 4 - 24

Estimated Start Date: April 12

Days of Week: Mon, Tue and Thur

Ages: 4 - 15 (Age before May 1, 2021)

Cost: \$45 for city residents

\$55 for Tupelo School District (non-city res.)

\$70 for Lee County residents



Youth Competitive Baseball

Tupelo Ranger Baseball and Tupelo Titan Baseball is the highest level of baseball offered by Tupelo Department of Parks and Recreation. Age divisions range from 7U-14U, and are sanctioned through USSSA Baseball. Coaches are voted on by the Tupelo Youth Baseball Association Board, and players are chosen each year through a tryout assessed by two evaluators and one head coach. The coach and independent evaluators rate each participant on fielding, mobility, arm strength, accuracy, speed, bat control, ball control, and power.

Registration Dates: Mid June (Annual Tryouts)

Estimated Season: August - October & February - June

Days of Week: Mon, Tue, Thur and Weekends

Ages: 7 - 14 (Age before May 1, 2021)

Youth Recreational Softball

The youth softball league aims to provide a positive learning environment for girls to master the fundamentals of fastpitch softball, practice sportsmanship, teamwork, and participate in healthy competition. The league is designed to promote skill progression through modifications of rules at each playing level, starting with t-ball then coach-pitch, then finally fastpitch. Games are played at the softball complex located at Veterans Memorial Park.

Registration Dates: January 4 - 24

Estimated Start Date: April 20

Day of Week: Mon, Tue, and Thur, some Sat

Ages: 4 - 13 (Age as of December 31, 2021)

Cost: \$45 for city residents

\$55 for Tupelo School District (non-city res.)

\$70 for Lee County residents

Youth Competitive Softball

The Tupelo Softball Association proudly hosts the Mississippi Express program for competitive fastpitch softball. Teams are formed using an open tryout format, evaluating players based on skills and drills designed to allow players to display their talent in the various aspects of the ever-evolving game of fastpitch softball. Players selected to teams will compete throughout the year in tournaments and showcase events on the local, state, regional, and national level.

Tryout Date: Late June - Late July 2021

Start Date: TBA

Days of Week: Weekday Practices, Weekend Games

Ages: 7 - 18



Youth Recreational Soccer

Tupelo Youth Soccer is designed to promote and teach the game of soccer to all the youth of Tupelo. Soccer is played in the Fall and Spring of each year and all games are played at the BankPlus Sportsplex at Ballard Park.

Registration Dates: May 17 - June 6

Estimated Start Date: September 7

Days of Week: Mon, Tue and Thur

Ages: Boys or girls born before December 31, 2017

Cost: \$50 city residents

\$60 Tupelo School District (non-city res.)

\$75 Lee County resident



Tupelo Fútbol Club

Tupelo Fútbol Club's purpose is to provide players with the best available training and coaching to help them improve their team and individual skills. TFC seeks to provide every player with the opportunities both on and off the field that will help them advance to the highest level. TFC also hopes to create a program that all players, parents and spectators will be proud of and that they will represent our community with pride.

Tryout Dates: TBA

Estimated Start Date: August 1

Ages: Boys and girls born between 2013 and 2003



TYSA Tots Soccer

The TYSA Tots program is designed to introduce your child to soccer in a fun and exciting format. Our aim is to allow kids an opportunity to experience soccer and get excited to play for the next seasonal year. Players eligible for this program would be age eligible to register for recreational soccer next year.

Registration Dates: January 4-22

Estimated Start Date: March 2

Ages: Boys and girls born between August 1, 2016 and December 31, 2017

Cost: \$50 city residents (includes a t shirt)

\$60 Tupelo School District (non-city res.)

\$75 Lee County resident



Youth Recreational Flag Football

This league provides the citizens of Tupelo a recreational program to teach the basic fundamentals and to learn sportsmanship. There are five lighted fields located at BankPlus Sportsplex at Ballard Park with restrooms, concession, walking track, skate park, and playground area.

Registration Dates: May 17 - June 6

Estimated Start Date: August 14

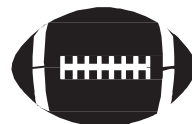
Days of Week: Mon and Thur

Ages: 6 - 11 (Age as of September 1, 2021)

Cost: \$45 for city residents

\$55 for Tupelo School District (non-city res.)

\$70 for Lee County residents



Youth Cheerleading

Everyone that signs up for cheerleading will be a cheerleader for our youth flag football program. One mass clinic will be conducted by high school cheerleaders.

Registration: May 17 - June 6

Estimated Start Date: August 14

Ages: 6 - 11 (Age as of September 1, 2021)

Cost: \$15 per child

*Cost does not include uniform.

Cheer Workshop: TBD

Workshop Cost: Free



Youth Basketball

This League is open to both boys and girls. Games are played at the Police Athletic League, Lee Acres Storm Shelter, and Theron Nichols Storm Shelter. We use drop down goals for the youngest groups to help them become fundamentally sound. Check our website for upcoming camps and clinics.

Registration Dates: September 6 - 26

Estimated Start Date: Dec. 6

Day of Week: Mon, Tue, Thur and Sat

Ages: 6 - 14 (Age as of September 1, 2021)

Cost: \$45 for city residents

\$55 for Tupelo School District (non-city res.)

\$70 for Lee County residents



Tupelo Wave Football

Youth Wave Youth Football has been around since 2003. We have coached hundreds of athletes in the most up to date training techniques, teamwork, structure and discipline. Most of our coaches have played at the collegiate level. We are also certified with the (AYF) American Youth Football organization. Each year an athlete participates with Tupelo Wave their skill level grows which enables them to be successful at the varsity level. Tupelo Wave is one of the most successful football organizations and participates in one of the strongest leagues in North Mississippi. Come check it out.

The Tupelo Wave program is supported by the Tupelo High School Coaches.

Contact: Russell Verell 662-231-6467

Like us on Facebook: Tupelo Wave Youth Football



Lee County Bears Youth Football & Cheer

Youth sports organization established to promote wholesome development of youth through association with adult leaders in a positive, safe environment.

Good sportsmanship: we thrive to create a positive environment based on mutual respect and hard work rather than "winning at all cost" attitude. Positive reinforcement builds confidence.

Contact: Kordell Bradley- 662-610-5453

Leecountybears@gmail.com



Northeast MS Tennis Academy

Individual and semi-private lessons are available upon request for those who wish to develop and improve specific skills or just looking for a great workout. We also offer junior clinics for ages 5-18. All instructional programs offered are designed to allow each individual to progress at their own pace and to the extent of their ability. All lessons are taught at Rob Leake City Park Tupelo Tennis Facility.

Contact: Jarred Grimes at 662-669-0042

Adult & Senior Tennis Leagues

These leagues are coordinated through USTA, Southern Tennis Association (STA), and the Mississippi Tennis Association (MTA). All players must be current members of the USTA for the entire local league season. These are fun and exciting leagues to engage in friendly competition. All players, teams, and local leagues must abide by all applicable USTA, STA, and MTA rules and regulations, which can be found at www.mstennis.com. All home matches will be played at Rob Leake City Park Tupelo Tennis Facility. For more information email Tupelo Tennis Academy at tatennispros@gmail.com.

Bel-Air Golf Course

The 9-hole Bel Air Golf Course in Tupelo, MS is a public golf course that opened in 1940. Bel Air Golf Course measures 2461 yards from the longest tees. Bel-Air now has a PGA Certified Instructor, Paul Hjulberg. He is experienced with all levels of play. Contact the course for lessons or clinics.

2107 Country Club Rd
Tupelo, Mississippi 38804
Lee County

Contact: (662) 841-6446, (662) 338-4200
Mon-Thur (9 w/cart \$20)(18 w/cart \$25) Friday-Sunday(9 w/cart-\$25)(18 w/cart-\$30).
Seniors- Mon and Thur before 12:00 (18 w/cart \$13)



Tupelo Disc Golf

Disc golf is played like regular golf but instead of using golf balls and clubs you use a plastic disc like a Frisbee. The object is to throw your disc from a designated "tee pad" area towards a metal basket surrounded by chains. Once your disc is in the basket, you've completed the hole. Tupelo has four disc golf courses in the Park and Recreation System. Three courses are at Veterans Park and the other at Ballard Park.

For more information on Tupelo Disc Golf visit: www.tupelodiscgolf.com or
www.facebook.com/TupeloDiscGolf

Adult Softball

There are a variety of leagues available for church, recreational, competitive, and co-ed softball teams. Tupelo will continue to offer a softball league with men's and women's divisions. USA softball rules will be in effect with a few local league rules. Games will be played at Eastwood Complex in the Spring & Veterans Park in the Fall.

Registration Dates: Spring: Feb. 1 - March 1; Fall: July 1 - July 25

Spring Start Date: April 20

Days of Week: (Spring) Mon, Tue and/or Thurs

Fall Start Date: August 17

Days of Week: (Fall) Mostly Tue and some Mon

Ages: Adult Men & Women

Cost: \$375 per team



Adult Kickball

Tupelo Parks and Recreation Department will offer adult kickball as a fall sport every year. Kickball will provide participants a way to enjoy time outdoors as well as enjoy spending time socializing with others. All participants must be 16 years of age or older.

Registration Dates: July 1 - July 25

Estimated Start Date: August 19

Day of the Week: Mostly Thur and Some Mon

Ages: Adult Men & Women

Cost: \$125 per team



Adult Soccer League

Tupelo Youth Soccer Association is now offering an adult soccer league. This is a great opportunity to socialize, exercise and compete in a fun atmosphere. For more info contact Laura Kramer at 662-841-6440.

Estimated Start Date: May 24

Day of the Week: Monday

Cost: \$30 per player



Summer Day Camp

We create opportunities for fun, adventure and learning in a safe, healthy, supervised outdoor/indoor program. This program is for children that have completed kindergarten but not to exceed the fifth grade. Register online at tupeloparksandrec.org

Registration: May 4 (Until full)

Camp: June 1

Cost: \$45 per week per child (city residents)

\$40 per week per child (2 or more in family), ([city residents only](#))

\$50 per week per child (non city resident)



Healthy Kids Running Series

The Healthy Kids Running Series is a five week running program for kids from Preschool to 8th grade, typically ran on Sundays. Each Race Series takes place once a week and offers running events like the 50 yard dash and the one mile run. Kids will compete each week of the Series for a chance to earn points, and at the end of the Series the top boy and girl finisher with the most points in their respective age division will receive a trophy. All athletes receive a medal the final day. There will also be a parent run during week 5!!!

Registration Dates: **Spring** February 1 **Fall:** July 12 (check website for link)

Estimated Season: April / May (Spring) and September / October (Fall)

Day of the Week: TBD

Ages: 2 year old – 18 year old

Cost: \$35 for the 5 weeks or \$10 per race

www.healthykidsrunningseries.org



C.C. Augustus Pool

1400 N. Green Street

Season runs June 7 - July 30

Mon-Fri (1 p.m. - 5 p.m.) (Closes at 4 p.m. on Mon)

Admission \$2.00 for swimmers and non-swimmers

**Private Parties available during the season. \$250.00.*

Contact 840-3768 for more information.



Tupelo Aquatic Center

Come take a splash with us. We offer a variety of programs, including water aerobics, birthday parties or board meetings, gentle yoga, BOGAfit classes, Aqua Zumba, chair stretch, swim lessons for youngsters and those young-at-heart, fun and family recreational swimming, lifeguard certification courses, and a place to make new friends. Located at 692 North Veteran's Blvd.

Visit www.swimtupelo.com or call (662) 840-3768 for more information.

Hours of Operation:

**Due to Covid - 19 restrictions,
please contact our office for
current hours of operation.**



Lifeguard Certification Class

The lifeguard training course prepares individuals to assume the duties and responsibilities of lifeguards at the swimming pools. This course provides the knowledge and skills designed to save the life of another person in the event of an emergency. The lifeguard class will be taught at the Tupelo Aquatic Center. Prerequisites are passing the pre-course test which involves swimming 300 yards continuously, treading water for two minutes (without using hands) and retrieving a diving brick (approximately 10 lbs.) from 7-12 feet of water within 80 seconds.

Class 1: January 17-18

Class 2: March 12-13

Class 3: April 5

Class 4: April 30-May1

Class 5: May 17-18

Class 6: December 20

Ages: 15 and up

Cost: \$240 (Blended Learning Course)

Recertification Cost: \$190



Bel-Air Senior Recreation Center

3791, 2107 Country Club Road, Pat Clark, Director

Building Currently Under Construction.

Various activities are available on a daily basis in which anyone 50 plus can participate. We offer scrapbooking classes, arts/crafts, card games, line dance classes, and other personal workshops. Come join quite an active group of individuals who love to stay busy and have fun!

Call Park & Recreation at 662-841-6440 with any questions about the Bel-Air Senior Recreation Center.

Duplicate Bridge Clubs

Tupelo Duplicate Bridge Club has games 3 days a week. Monday, Wednesday, Friday at 1:00pm. This is a fun group that welcomes players of all levels and offers lessons for beginners. There is always great food and fellowship to enjoy with players of all ages! Don't have a partner? Don't worry! Call Suzi Rogers, the Club Manager and she will find the perfect partner for you.



[Suzie Rogers, Club Manager 662-213-4278](mailto:suzie.rogers65@gmail.com) suzie.rogers65@gmail.com

Tupelo Ballroom Dance Club

The Tupelo Ballroom Dance Club is an outlet for social interaction with individuals who enjoy ballroom dancing or those interested in learning. Free classes are offered at the The Dance Studio each Monday night 7:30-9:00pm. A dance is held each month. For more information on upcoming dance dates, times, and location, please visit www.tupeloballroomdance.blogspot.com

Young at Heart Club

The Young at Heart Club is a group for senior adults 50 years and older. The group is a great way to meet other seniors within the Tupelo area. Each night there is music and dancing. Special programs which usually involve holiday programming/dress-up events are scheduled throughout the year. [Each participant pays \\$5.00 per person each Thursday. Catered events are \\$7.00 per person. With the Bel-Air Center under construction, please call 662-841-6440 for information.](#)

Elvis Presley Birthplace

We all know about the meteoric rise to fame. We all know about the mansion called Graceland. We all know how it ended. This is how it began.

Elvis Aaron Presley was born in Tupelo, Mississippi on January 8, 1935 to Vernon and Gladys Presley. Born in a two-room house built by his father, grandfather and uncle, Elvis was one of identical twin brothers born to the Presley's. His brother, Jessi Garon, was still born. Elvis grew up in Tupelo surrounded by his extended family including his grandparents, aunts, uncles and cousins.

Financially, times were hard on Vernon and Gladys, and they had to move out of the house where Elvis was born when he was two and a half years old for lack of payment. Vernon and Gladys worked various jobs while in Tupelo and moved several different during the thirteen years they resided in Mississippi.

While in Tupelo, Elvis attended the Assembly of God Church with his family where he was first exposed to gospel music that influenced his music al style throughout his career. It was in Tupelo where Elvis was exposed to bluesmen in the Shake Rag community where he lived for a time. His family also listened to country music radio programs from which Elvis drew influence.

In 1945, Elvis made his first public radio broadcast. At 10 years old, Elvis stood on a chair and sang "Old Shep" in a youth talent show contest at the Mississippi-Alabama fair and Dairy Show at the Tupelo Fairgrounds. WELO radio broadcast the talent show.

"Come see where it all started"

- Walk of Life
- Mississippi /historic Site
- "The" Birthplace
- "Elvis at 13" Statue
- Mississippi Music Trail Markers
- Elvis Childhood Church
- Elvis Presley Memorial Chapel
- Story Wall

- Fountain of Life
- Elvis Presley Museum
- Gift Shop
- Movie Theater
- Outside Amphitheater
- "Becoming" Statues at the Overlook
- Meditation Lake and Picnic Pavilion



Visitor Information

Phone: 662-841-1245 Fax: 662-690-6623 Website: www.elvispresleybirthplace.com
Email: dguyton@elvispresleybirthplace.com Monday thru Saturday 9:00am-5:00pm Sunday 1:00pm -5:00pm
Closed only on Thanksgiving and Christmas

The 15 acre park is located at 306 Elvis Presley. Drive in the Presley Heights Neighborhood. Presley Heights is on the East Side of the City of Tupelo easily accessible from Highways 45 and I22 or US 78. The newest attraction at the park is the "Meditation Lake." Located on the back side of the park. This lake has a new walkway encircling the lake. A new bridge, a beautiful waterfall and two lighted water fountains in the lake. Just a little way up the hill, a new picnic pavilion with restrooms overlooks the lake. The pavilion is available to rent. Just call 662-841-1245

Events at the Birthplace.

January 8 is always the birthday celebration. Everyone is invited to come and enjoy singing "Happy Birthday Elvis", eating cake and punch and coffee is always provided.

Each year in early August the birthplace hosts a "Fan Appreciation Day" We celebrate all the fans coming from all over the world to be a part of this special memorial time. Call us at 662-841-1245 to get all the details for this "Fan Day Get Together."

Community Events

In-water Easter Egg Hunt

The 10th annual In-water Easter Egg Hunt will be held at Tupelo Aquatic Center, 692 North Veterans Blvd., Tupelo, MS. Assorted sizes of beach balls will be scattered throughout the Elvis Presley pool at the facility. All will be floating on top of the water. Ages 5 years to 12 years of age are welcome to participate. If you cannot swim independently, we do have life jackets during the hunt but must have an adult in the water with your non-swimmer. Swimsuits must be worn. We will have inflatables available for participants to play on in the competition pool. Pre-registration will be required. Limit 100 max participants unless otherwise stated. [Friday, March 26, 2021. Cost is \\$10 per participant. No Refunds.](#)

Cherry Blossom Festival - (2021 Event is cancelled)

The 4th Annual Cherry Blossom Festival, is all about bringing awareness of the Japanese culture to the local and county communities. Japanese food sampling, music, brush writing, oragami, Bonzai display and rice pounding demonstration.

“One Goal, One Passion—Bridging the City’s Cultures Together”

Children’s Fishing Rodeo

The Fishing Rodeo will be held [Friday, April 9, 2021 at Veterans Park](#). Be sure to bring your lawn chairs, bait, tackle, and the whole family. Children ages 3-15 can participate. Registration begins at 5:00pm and fishing begins at 6:00pm. This is a great event for the entire family! Free Event!

Citywide Sidewalk Sale

One man’s trash is another man’s treasure! Purchase a 10x10 space for \$30.00 beginning June 1st and turn all that clutter into CASH! The City-Wide Sidewalk Sale date, time and location is TBA. Vendor is responsible for their own tents, tables, and transporting merchandise to your space from the parking lot. Contact Shanta Jones at 841-6440 for more information.

Dudie Burger Festival

Oren Dunn City Museum celebrates the Dudie Burger, created by Dudie Christian and sold in Dudie’s Diner, formerly a Memphis street car. Relive the by-gone era of the dough burger, doo-whop music, and fun times at Dudie’s Diner. [The 2021 Festival will be held on Saturday, May 1.](#)

Movies in the Park

Come enjoy FREE movies under the stars. Movie titles will be released on the Tupelo Parks & Recreation Facebook page. Movie locations and times will be TBA.

All-America City Family Picnic in the Park

The biggest 4th of July celebration in North Mississippi is here in Tupelo. The crowds get larger each year with all of the activities packed into the event. There is prime entertainment for all ages, a variety of food in the vendor food court area, and fun activities for the kids. Come to Ballard Park and celebrate with all of your friends and neighbors. This year’s event will be held [Sunday, July 4, 2021.](#)

Touch-A-Truck

This program is designed to allow children to touch, climb, and explore trucks and heavy machinery and to learn what purpose the vehicle serves in our community. Vehicles of all types will be on site and various staff of the vehicles will be present for your children to ask questions and satisfy their curiosities. The event will take place [Saturday, September 11, 2021 from 9:00 a.m. at Veterans Park-Sensory friendly hour 9 a.m.-10 a.m., 10:00 a.m.-1:00 p.m.- Horns and Sirens](#). This is a free event and great for the whole family.

Family Camp Out at Veterans Park

The camp out will be held *Friday, September 24-25, 2021 at Veterans Park* and all the fun begins at 4pm. Bring your tents and sleeping bags and you'll be ready to take part in all the activities. Whether you are a seasoned camper or a newbie, this campout is for you! Cost for the Family Fun Campout is *\$5.00 per person early registration. \$10.00 per person for late registration. Children under age 2 are FREE.* To register, call 662-841-6440. Space is limited.

Communities Forward Festival

The 14th Annual Communities Forward Festival, held on *Saturday, September 18, 2021 location is TBA*, is an ongoing passion project of Councilwoman Nettie Davis of Ward 4 and the City of Tupelo. This festival aims to foster positive interactions between the city's citizen and its law enforcement officers by celebrating together through an afternoon of activities such as a parade, basketball tournament, local food vendors, live entertainment, and much more.

Celebration of Cultures

The Celebration of Cultures Festival, celebrates diversity through unifying cultures. The purpose of this event is to share and learn about the cultures of all the ethnic groups we have in Tupelo and the surrounding areas. We are looking to bring together all cultures through dancing, singing, food and fun. *Sunday September 26, 2021.* At Ballard Park Stage, 3:00pm - 6:00pm.

Pick Your Pumpkin from Our Patch

The Tupelo Aquatic Center will turn into the Great Floating Pumpkin Patch in the Elvis Presley Pool on *Friday, October 22nd, 2021. Children ages 5-12 are welcome to participate*. If you cannot swim, life jackets will be available but also must have an adult in water with a non-swimmer. Kids can pick a pumpkin from our in-water pumpkin patch. The participants will swim around the pool and pick out the pumpkin that suits their fancy! Kids can enjoy the inflatables that will be out that morning in the competition pool. Swim suits must be worn. Pre-registration will be required.

Cost \$10 per participant. No Refunds. Limit 100 participants (unless stated otherwise).

Trunk or Treat

Bring all your little spooks out to the Tupelo BankPlus Sportsplex at Ballard Park Soccer complex on *Monday, October 25, 2021 at 6:00 pm* Halloween Egg Hunt and Trail of Treats. There will be booths full of candy and an egg hunt with toys and candy. This event is for kids 12 and under. Admission is one bag of candy per family of four. Don't forget your flashlights! Volunteers are needed to decorate booths. There will be eggs and candy while supplies last.

The Annual Christmas Lighting of Ballard Park and Oren Dunn Museum Open House

This event includes local school choirs, open house at Tupelo Parks and Recreation, and annual toy exhibit at the Oren Dunn Museum. The Lighting will take place *Monday, November 30th, 2021 at 6:00 pm.*

Parks & Amenities

Aycock Park (.5 Acres)

Picnic tables and grill

Ballard Park (153 Acres)



3 Acre lake, 1 gazebo, 2 pavilions, 1 stage, 3 restroom facilities, Skate Park, disc golf course, 2 playgrounds, 2.75 mile trail, cross country trail, Life Trail Fitness system, 1 maintenance building, 20 picnic tables, 2 sand volleyball courts, Oren Dunn Museum, Parks & Recreation Administrative Office, 1 Athletic Operation Center, 40-capacity storm shelter.

BankPlus Sportsplex at Ballard Park – Baseball Fields (55 Acres)

12 turfed infield baseball fields, pavilion, 2 concession stands, picnic area, 1.2 mile cross country course.

BankPlus Sportsplex at Ballard Park Soccer Fields

15 lighted soccer fields, 2 pavilions, 1 concession stand

Bel-Air Golf Course (72 Acres)

1 nine hole golf course, 1 senior recreation facility and club house, 1 maintenance facility.

Bristow Park (.6 Acres)

1 playground, 1 swing set, .15 mile trail.

Burt Park

Small seating area.

C.C. Augustus (.7 Acre)

85,000 gallon swimming pool, 1 recreation/meeting facility, support building for pool.

Chandler Park (.5 Acres)

Playground

Eastwood Softball Complex (35 Acres)

4 softball fields, 2 concession stands, 2 covered areas, maintenance shed.

Gateway Park (3.3 Acres)

2 water features, 3 pavilions, 1780 feet of trail.

Gumtree Park (22 Acres)



8 outdoor courts, 2 multi purpose fields, 1 pavilion, picnic tables, playground, amphitheater, 1 mile walking trail, and 40-capacity storm shelter.

Gun Club Park (9 Acres)

1 pavilion, playground, 1 mile trail.

Hancock Park (9.8 Acres)

3 outdoor courts, 1 pavilion, 2 playgrounds, .25 mile trail.

Haven Acres Park (1 Acre)

1 pavilion, 1 playground structure, .15 mile trail and 40-capacity storm shelter.

Lee Acres Park (4 Acres)



2 basketball courts, 1 lighted athletic field, 1 playground, 1 recreational facility, FEMA 1100-capacity storm shelter.

Old Mill Town Park (1.2 Acres)

2 outdoor courts, 1 playground, .125 mile trail.

Rob Leake City Park (34 Acres)



17 lighted tennis courts, 1 outdoor basketball court, 2 lighted athletic fields, pro shop, 2 pavilions, 1 restroom facility, 1 playground, .5 mile trail, 1 recreation/meeting facility, Splash pad, and 40-capacity storm shelter.

Robins Field (9 Acres)

playground, .25 mile trail.

Theron Nichols Park (35 Acres)



3 lighted athletic fields, 6 picnic sites, 1 restroom facility, 1 playground, .25 mile trail, 1 concession stand/pressbox, sand volleyball court, splash pad, FEMA 1100-capacity storm shelter.

Tupelo Bark Park (1 Acre)

Large dog play area, small dog play area, covered entry way with benches, picnic table, watering station, 2.5 mile Music Bend Trail.

Veterans Memorial Park (206 Acres)



Tupelo Aquatic Center, 3 pavilions, 1 restroom facility, 1 playground, .5 mile trail, Life Trail Fitness system, 3 disc golf courses, 4 turfed infield softball complex with support facilities, splashpad, and Veterans Memorial, F105 static display, Vietnam Veterans Memorial, 40-capacity storm shelter.

**All parks are free and open to the public with the exception of certain events.*

Oren Dunn City Museum

The Tupelo Story, from the time we were under a sea during the Mesozoic Era until dancing downtown on New Year's Eve in 2020, provides those who come to visit the Oren Dunn City Museum with a glimpse into the varied stories that make up the All-America's big story of community, growth, and unity.

Come, witness how the railroads built a community of subsistence farmers into a city that leads Mississippi in many ways. Return to the days of soda jerks, dough burgers, and, yes, the King of Rock n Roll by strolling through the grounds and entering the halls of what once was a birthing barn for award-winning Jersey cattle.

Open from 8 a.m. until 5 p.m., Monday through Friday, the Oren Dunn City Museum hosts monthly events that delve deep into the stories of Tupelo with special speakers and even musical guests.

Located in beautiful Ballard Park, once the home of Rex and Nelle Reed, the Oren Dunn City Museum welcomes you.

Contact the Museum for more information 662-841-6438

Leesha Faulkner, Curator

Sihya Smith, Assistant Curator



TUPELO BASEBALL COMPLEXES

Theron Nichols Park

1743 MITCHELL ROAD
TUPELO, MS 38801

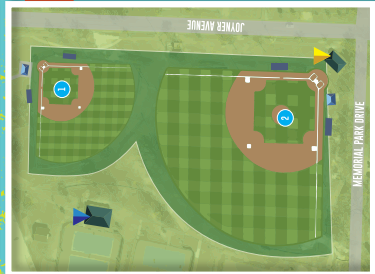
1. THERON NICHOLS FIELD 1
2. THERON NICHOLS FIELD 2
3. THERON NICHOLS FIELD 3



Rob Leake City Park

1107 JOYNER AVE.
TUPELO, MS 38804

1. BOO FERRIS FIELD
2. ANDY REECE FIELD



BankPlus Sportsplex at Ballard Park

3611 WESTGATE DRIVE
TUPELO, MS 38801

1. T-BALL FIELD 4
2. T-BALL FIELD 3
3. T-BALL FIELD 2
4. T-BALL FIELD 1
5. BANKPLUS FIELD 1
6. BANKPLUS FIELD 2
7. BANKPLUS FIELD 3
8. BUFFALO WILD WINGS FIELD
9. RENASANT BANK FIELD
10. COMMUNITY BANK FIELD
11. GIBSON CORRUATED FIELD
12. ORTHOPAEDIC INSTITUTE FIELD
13. STEEL'S DIVE FIELD
14. GIBSON CORRUATED FIELD
15. KEN JETER STORE & RESTAURANT SUPPLY
16. TUPELO CIVIL FIELD



PARK FACILITIES

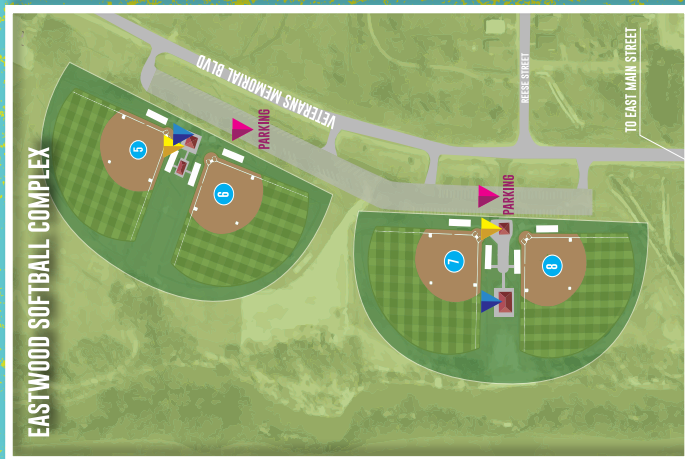
- CONCESSIONS
- RESTROOMS
- PARKING LOT



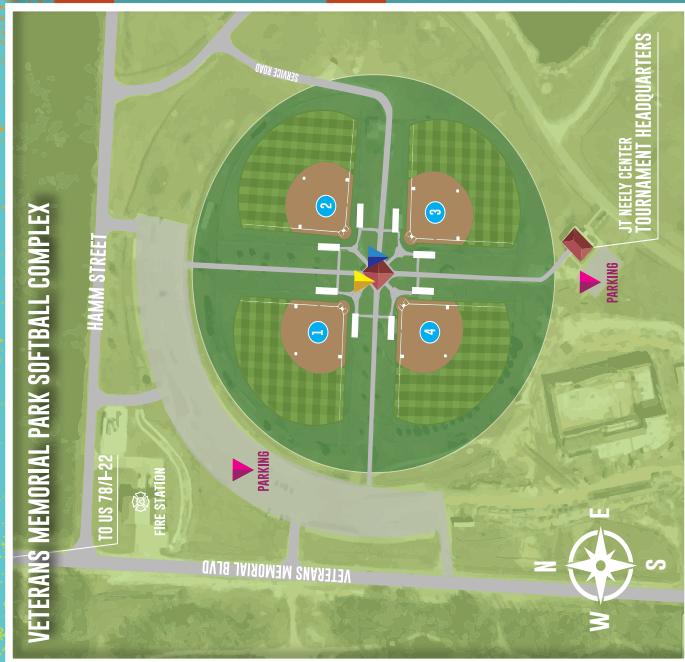
655 Rutherford Rd (3.60 mi)
Tupelo, Mississippi 38801
(662) 841-4440
tupeloparksandrec.org
tupelosparksandrec.org

TUPELO SOFTBALL COMPLEXES VETERANS MEMORIAL BLVD

EASTWOOD SOFTBALL COMPLEX



VETERANS MEMORIAL PARK SOFTBALL COMPLEX



SOFTBALL FIELDS

1. DODGE'S FIELD
2. BARNES CROSSING - HYUNDAI FIELD
3. COCA-COLA FIELD
4. TUPELO, BUFFALO PARK FIELD
5. DICK'S SPORTING GOODS FIELD
6. SOCIAL SECURITY CONSULTANTS FIELD
7. NOBLE FIELD
8. BUSH FIELD

PARK FACILITIES

- CONCESSIONS
- RESTROOMS
- PARKING LOT



492 N Veterans Memorial Blvd
Tupelo, Mississippi 38804
tupeloparksandrec.org
tupelosoftball.org

