

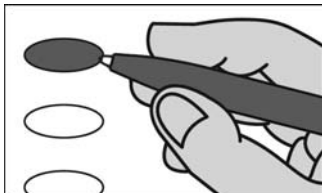
11

21

OFFICIAL BALLOT  
STATE OF MISSISSIPPI  
LEE COUNTY  
CITY OF TUPELO  
2025 GENERAL ELECTION  
TUESDAY, JUNE 3, 2025

WARD 1, P1&2 ALL SPLITS  
BALLOT STYLE 1

INSTRUCTIONS TO VOTER:



Fill in the oval to the left of the name of your choice. You must blacken the oval completely using a dark pen, and do not make any marks outside of oval. Do not use a red pen, felt tip pen, or any type of pencil.

**DO NOT CROSS OUT** - If you change your mind, exchange your ballot for a new one. If you tear, soil, deface or erroneously mark this ballot, return it and obtain another.

40

41

**For CITY OF TUPELO  
MAYOR**  
Vote for ONE

- 42
- 43
- Todd Jordan Republican
- Write-In

**For CITY OF TUPELO  
COUNCILMAN WARD 1**  
Vote for ONE

- Chad Mims Republican
- Write-In

51

**END OF BALLOT**

11

21

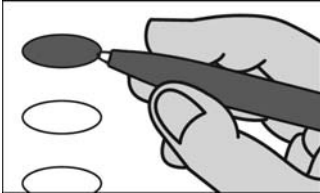
**OFFICIAL BALLOT  
STATE OF MISSISSIPPI  
LEE COUNTY  
CITY OF TUPELO  
2025 GENERAL ELECTION  
TUESDAY, JUNE 3, 2025**

WARD 2, P3&4 ALL SPLITS  
BALLOT STYLE 2

40

41

**INSTRUCTIONS TO VOTER:**



Fill in the oval to the left of the name of your choice. You must blacken the oval completely using a dark pen, and do not make any marks outside of oval. Do not use a red pen, felt tip pen, or any type of pencil.

**DO NOT CROSS OUT** - If you change your mind, exchange your ballot for a new one. If you tear, soil, deface or erroneously mark this ballot, return it and obtain another.

42

43

**For CITY OF TUPELO  
MAYOR**  
Vote for ONE

- Todd Jordan Republican
- Write-In

**For CITY OF TUPELO  
COUNCILMAN WARD 2**  
Vote for ONE

- Lynn Bryan Republican
- Write-In

52

**END OF BALLOT**

11

21

40

41

42

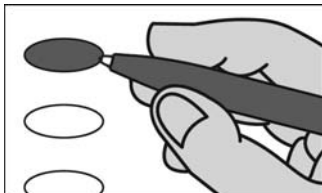
43

53

**OFFICIAL BALLOT**  
**STATE OF MISSISSIPPI**  
**LEE COUNTY**  
**CITY OF TUPELO**  
**2025 GENERAL ELECTION**  
**TUESDAY, JUNE 3, 2025**

WARD 3, P5&6 ALL SPLITS  
BALLOT STYLE 3

**INSTRUCTIONS TO VOTER:**



Fill in the oval to the left of the name of your choice. You must blacken the oval completely using a dark pen, and do not make any marks outside of oval. Do not use a red pen, felt tip pen, or any type of pencil.

**DO NOT CROSS OUT** - If you change your mind, exchange your ballot for a new one. If you tear, soil, deface or erroneously mark this ballot, return it and obtain another.

**For CITY OF TUPELO  
MAYOR**  
Vote for ONE

- Todd Jordan Republican
- Write-In

**For CITY OF TUPELO  
COUNCILMAN WARD 3**  
Vote for ONE

- Travis Beard Republican
- Shirley Hendrix Democrat
- Write-In

**END OF BALLOT**

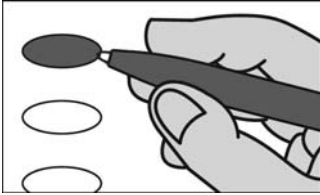
11

21

OFFICIAL BALLOT  
STATE OF MISSISSIPPI  
LEE COUNTY  
CITY OF TUPELO  
2025 GENERAL ELECTION  
TUESDAY, JUNE 3, 2025

WARD 4, P7&8 ALL SPLITS  
BALLOT STYLE 4

INSTRUCTIONS TO VOTER:



Fill in the oval to the left of the name of your choice. You must blacken the oval completely using a dark pen, and do not make any marks outside of oval. Do not use a red pen, felt tip pen, or any type of pencil.

**DO NOT CROSS OUT** - If you change your mind, exchange your ballot for a new one. If you tear, soil, deface or erroneously mark this ballot, return it and obtain another.

40

41

**For CITY OF TUPELO  
MAYOR**  
Vote for ONE

- 42
- 43
- Todd Jordan Republican
- Write-In

**For CITY OF TUPELO  
COUNCILMAN WARD 4**  
Vote for ONE

- Nettie Y. Davis Democrat
- Write-In

54

**END OF BALLOT**

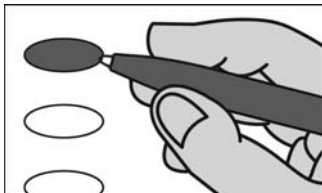
11

21

**OFFICIAL BALLOT  
STATE OF MISSISSIPPI  
LEE COUNTY  
CITY OF TUPELO  
2025 GENERAL ELECTION  
TUESDAY, JUNE 3, 2025**

WARD 5, P9 ALL SPLITS  
BALLOT STYLE 5

**INSTRUCTIONS TO VOTER:**



Fill in the oval to the left of the name of your choice. You must blacken the oval completely using a dark pen, and do not make any marks outside of oval. Do not use a red pen, felt tip pen, or any type of pencil.

**DO NOT CROSS OUT** - If you change your mind, exchange your ballot for a new one. If you tear, soil, deface or erroneously mark this ballot, return it and obtain another.

40

41

**For CITY OF TUPELO  
MAYOR**  
Vote for ONE

- 42
- Todd Jordan Republican
- Write-In

44

**For CITY OF TUPELO  
COUNCILMAN WARD 5**  
Vote for ONE

- 51
- Candria Lewis Democrat
- Bentley Nolan Republican
- Write-In

**END OF BALLOT**

11

21

40

41

42

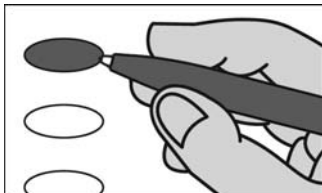
44

52

**OFFICIAL BALLOT**  
**STATE OF MISSISSIPPI**  
**LEE COUNTY**  
**CITY OF TUPELO**  
**2025 GENERAL ELECTION**  
**TUESDAY, JUNE 3, 2025**

WARD 6, P10 ALL SPLITS  
BALLOT STYLE 6

**INSTRUCTIONS TO VOTER:**



Fill in the oval to the left of the name of your choice. You must blacken the oval completely using a dark pen, and do not make any marks outside of oval. Do not use a red pen, felt tip pen, or any type of pencil.

**DO NOT CROSS OUT** - If you change your mind, exchange your ballot for a new one. If you tear, soil, deface or erroneously mark this ballot, return it and obtain another.

**For CITY OF TUPELO  
MAYOR**

Vote for ONE

- Todd Jordan Republican
- Write-In

**For CITY OF TUPELO  
COUNCILMAN WARD 6**

Vote for ONE

- Janet Gaston Republican
- Write-In

**END OF BALLOT**

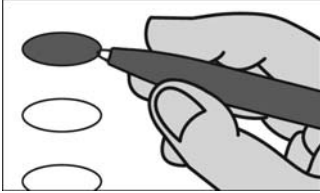
11

21

OFFICIAL BALLOT  
STATE OF MISSISSIPPI  
LEE COUNTY  
CITY OF TUPELO  
2025 GENERAL ELECTION  
TUESDAY, JUNE 3, 2025

WARD 7, P11 ALL SPLITS  
BALLOT STYLE 7

INSTRUCTIONS TO VOTER:



Fill in the oval to the left of the name of your choice. You must blacken the oval completely using a dark pen, and do not make any marks outside of oval. Do not use a red pen, felt tip pen, or any type of pencil.

**DO NOT CROSS OUT** - If you change your mind, exchange your ballot for a new one. If you tear, soil, deface or erroneously mark this ballot, return it and obtain another.

40

41

**For CITY OF TUPELO  
MAYOR**  
Vote for ONE

- 42
- Todd Jordan Republican
- Write-In

44

**For CITY OF TUPELO  
COUNCILMAN WARD 7**  
Vote for ONE

- 53
- Rosezlia 'Rosie' Jones Democrat
- Write-In

**END OF BALLOT**